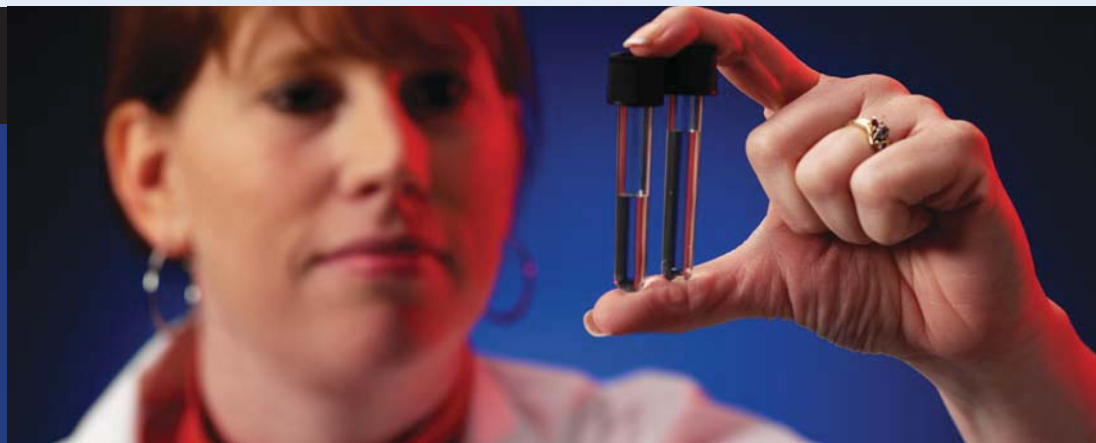


Saline 0.45%

Ready to use for automated ID/AST systems.

Saline 0.45%, for use with the Vitek® and Vitek® 2, provides safety, convenience, and ease of use when performing automated identification and antimicrobial susceptibility testing in your laboratory.

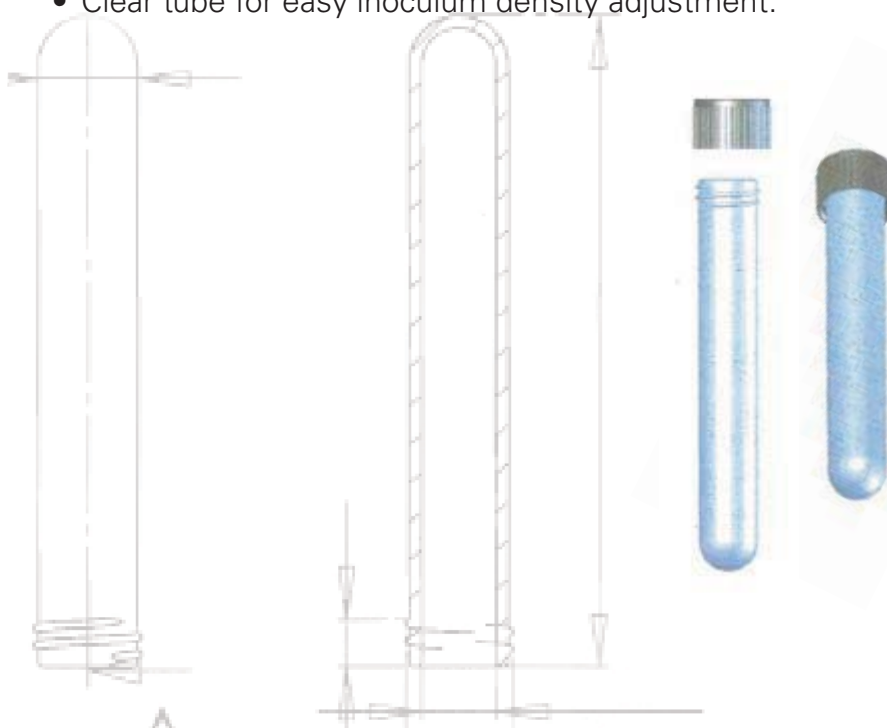
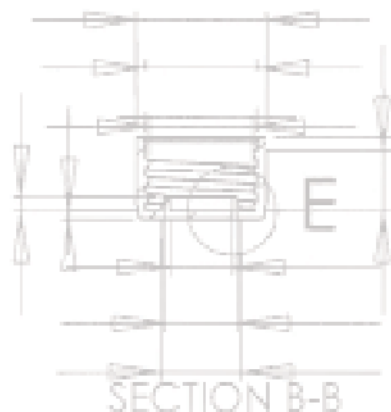
With more than 35 years of experience serving microbiology, you can rely on Remel for all your media needs.



Ready. Set. Saline.

Saline 0.45% for use with selected automated identification and susceptibility systems.

- Plastic tube with screw cap.
- Convenient, pre-filled, and ready to use.
- Versatile 1.8ml and 3.0ml fill volumes for selected automated ID/AST systems.
- Easy to use; no pipetting, dispensing, or autoclaving.
- Clear tube for easy inoculum density adjustment.



remel

Part of Thermo Fisher Scientific